



LEADTEK 2025 Investor Conference

2025/12/19

Copyright© 2020 Leadtek Research Inc. All rights reserved.
No copy and distribution without permission.

Company Profile

Date of Incorporation: 1986/10/24

IPO: 1999/6/3

Stock code: 2465

Capital: NT\$939,460,310

Chairman: K.S. Lu

President: Jerry Liang

Headquarters: Taipei, Taiwan

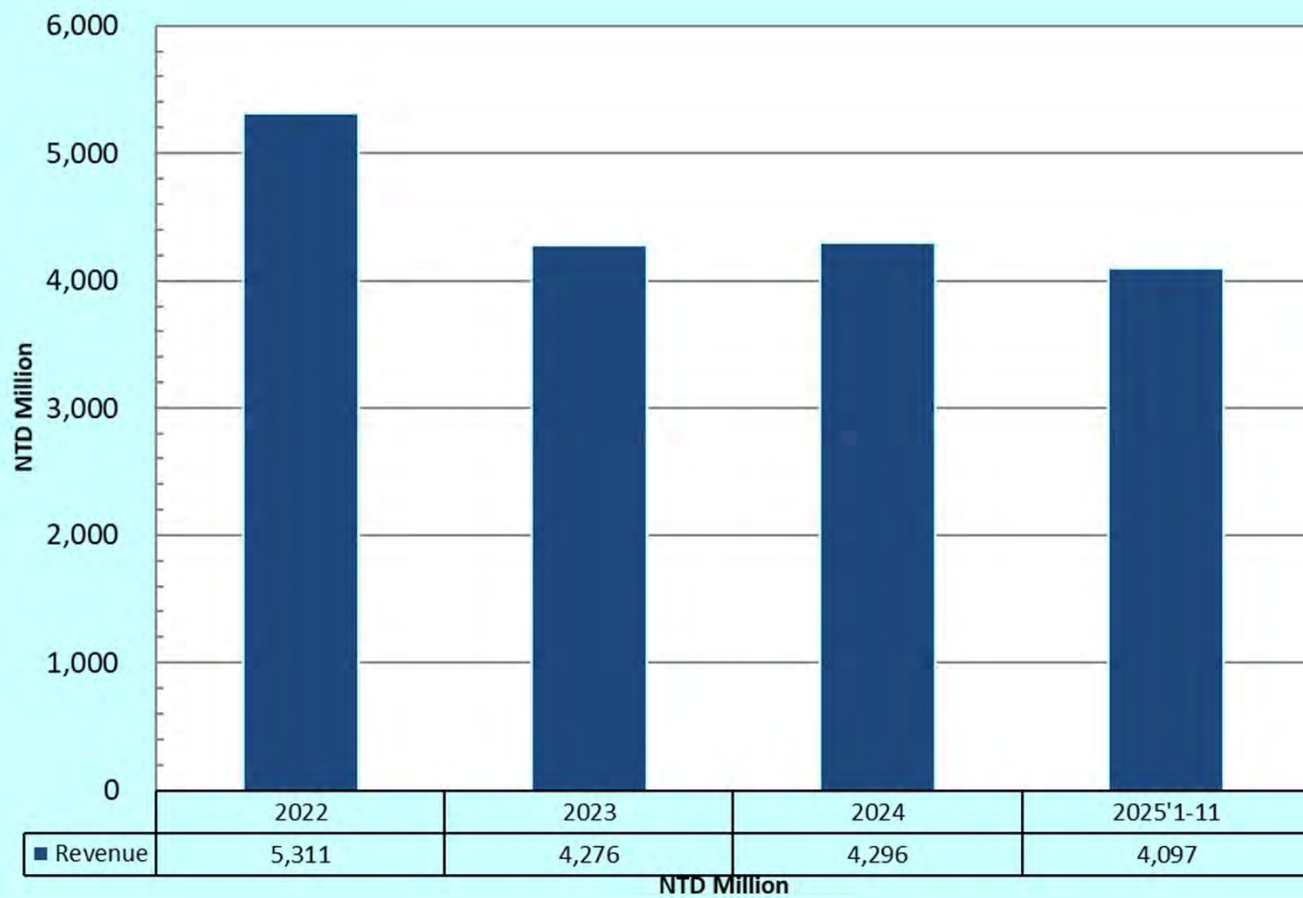
Subsidiaries: Leadtek (Shanghai) Research Inc.

Number of employees: 160 (Taipei+Shanghai)



Leadtek Research Inc. All rights reserved.
No copy and distribution without permission.

Revenue



All rights reserved.
ion without permission.

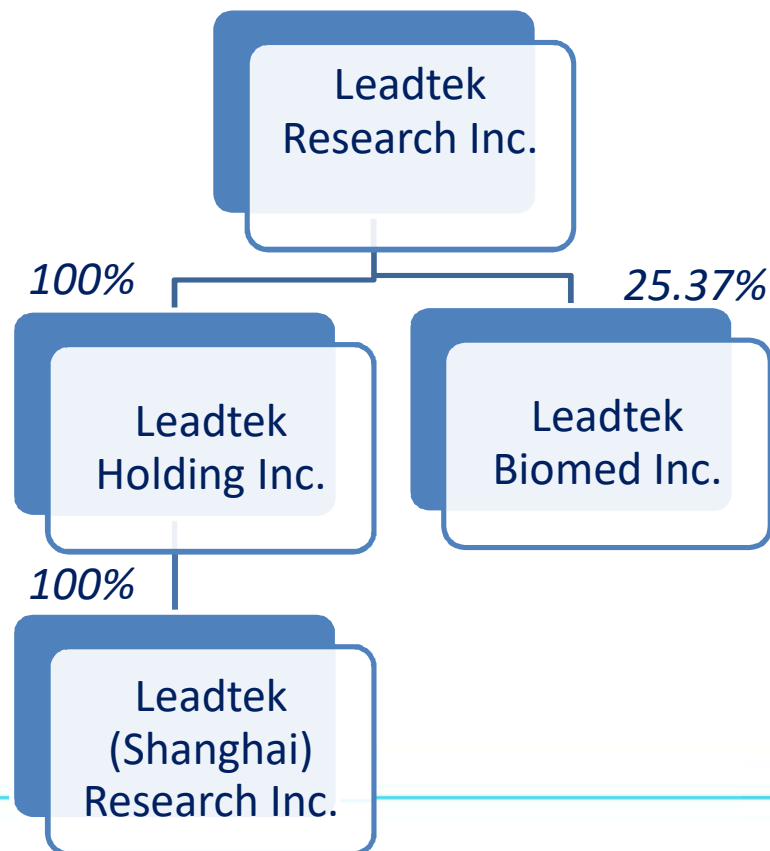
Income Statement for 2025Q1~Q3

				USD thousand	
Items	Year/Quarter	2025Q1	2025Q2	2025Q3	2025Q1~Q3
Revenue		798,309	758,125	1,951,552	3,507,986
Goss Profit		158,591	87,077	93,037	338,705
Operating Expense		118,848	90,521	63,780	273,149
Net Operating Income		39,743	-3,444	29,257	65,556
Non-Operating Income & Loss		-8,169	11,445	-39,375	-36,099
Net Income		20,532	22,983	-36,131	7,384
Net Income - to Parent Company		20,532	22,985	-36,226	7,291

Revenue for 2025Q1~Q3 - by products

		NTD thousand
Items	Revenues	Percentage
Computer Products	3,496,305	99.67%
Other Products	11,681	0.33%
Total	3,507,986	100.00%

Reinvestment Structure



Cash Capital Increase

Issuing shares : 10,000,000 shares Issue Price : NT\$45/share
 Funds Raised : NT\$450,000,000 Purpose : Repay Bank loans
 Completed : 2025/11/12

Balance Sheet				
				2025/9/30
Before capital increase			NT\$ thousand	
Assets	Liabilities	Equity	Liability Ratio	Book value per share
1,525,512	945,024	580,488	62%	6.92
After capital increase			NT\$ thousand	
Assets	Liabilities	Equity	Liability Ratio	Book value per share
1,975,512	495,024	1,030,488	25%	10.97

Leadtek Research Inc. All rights reserved.
 copy and distribution without permission.

39-year leading brand drawing cards

Our full range of consumer and workstation-grade graphics cards, based on the NVIDIA Blackwell architecture and incorporating fourth-generation RT cores and fifth-generation Tensor cores, offers high-quality and diverse products to fully meet market demands.

NVIDIA RTX PRO™ Blackwell 專業 GPU

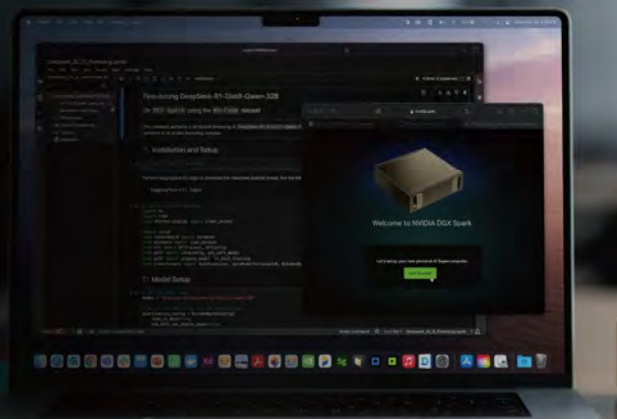
從「工作站」到「資料中心」，實現突破性的 AI 與視覺運算





The world's smallest AI supercomputer

NVIDIA DGX Spark, designed for AI developers



NVIDIA DGX™ Spark 桌上型 Grace Blackwell 架構 AI 超級電腦



NVIDIA GB10 超級晶片



128GB 的一致性統一系統記憶體



NVIDIA ConnectX 網路



NVIDIA AI 軟體堆疊





NVIDIA deep Learning Certification Course

Leadtek is an NVIDIA Authorized Deep Learning Institution (DLI), with courses taught by Leadtek instructors who are NVIDIA DLI certified. Popular courses in Large Language Modeling (LLM) and Robotics Development (2025).



NVIDIA Isaac for
Accelerated Robotics

Rapid Application Development
with Large Language Models
(LLMs)

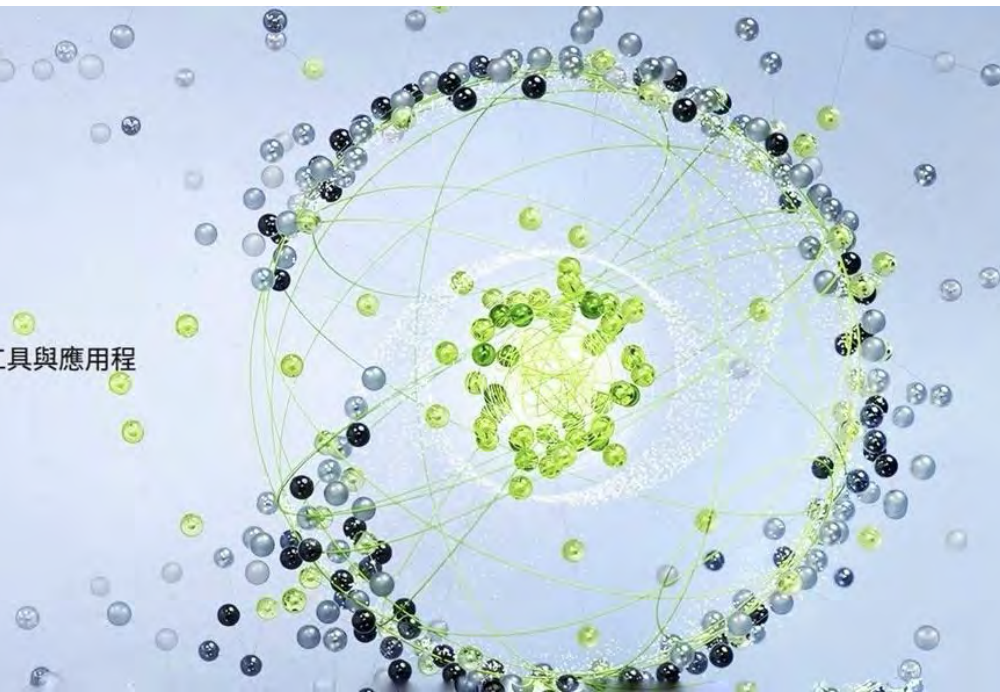
Leadtek Research Inc. All rights reserved.
No copy and distribution without permission.

NVIDIA Enterprise

Leadtek is the Asia Pacific distributor for NVIDIA Omniverse Enterprise & NVIDIA AI Enterprise platforms.

NVIDIA Omniverse Enterprise

開發以 OpenUSD 為基礎的工業數位化工作流程工具與應用程式。



Leadtek reserves all rights reserved.
No copy and distribution without permission.

The AIDMS management process adopts a no-code approach, allowing for quick and easy one-click operation.

1. Computer vision AI deep learning model training and deployment
2. Rapid Deployment of Large Language Models

Rapid AI digital transformation achieved with the help of Leadtek

Computer vision applications

製造業	農林漁牧業	智慧監控	教育
<ul style="list-style-type: none">異常檢測瑕疵檢測文字辨識品質控制	<ul style="list-style-type: none">產物計數魚斑檢測蟲害檢測產物分析	<ul style="list-style-type: none">物件計數跌倒偵測作業程序煙霧預警	<ul style="list-style-type: none">技術研究新模型開發教學工具產學技轉

LLM Applications

金融業或服務業等	製造業等企業	公部門
<ul style="list-style-type: none">回答精準且用詞人性化的智能客服商品規格比較文字辨識產品推薦小幫手	<ul style="list-style-type: none">技術文件 QA公司規定 QA產品規格查詢、比較與表格化零件管理 QAISO資訊 QA	<ul style="list-style-type: none">法規文件助理公文規則 QA資安規定助理民眾服務客服

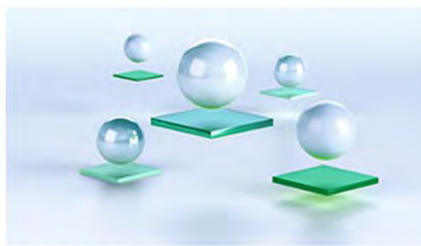
NVIDIA vGPU Solution

NVIDIA Virtualized GPU (vGPU) software is installed along with the virtual machine monitor at the virtualization layer. This software creates virtual GPUs, allowing all virtual machines (VMs) to share the physical GPU installed on the server. Virtualization and cloud environments can also support high-performance engineering and authoring applications, as well as computationally intensive workloads such as artificial intelligence and data science.



NVIDIA Virtual Compute Server(vCS)

Power the most compute-intensive workloads with virtual GPUs



NVIDIA RTX Virtual Workstation (vWS)

Virtual Workstations for creative and technical professionals using graphics applications.



NVIDIA Virtual PC (vPC)

Virtual desktop infrastructure for knowledge workers who use office productivity applications and multimedia.



NVIDIA Virtual Applications (vApps)

Application streaming with Remote Desktop Session Host solutions.



A powerful and efficient "self-driving brain"

A new generation of centralized automotive computers achieves revolutionary AI computing performance of 1,000 trillion operations per second and a significant cost reduction.

NVIDIA DRIVE AGX Thor Developer Kit

適用於人工智慧定義車輛的車
用運算



Leadtek Research Inc. All rights reserved.
No copy and distribution without permission.



Comprehensive AI cloud computing solutions

- Enterprise-grade NVIDIA certification system
- Software integration, system planning, and maintenance services



GS5855T
2 CPU, 10 GPU



GS5852T
2 CPU, 8 GPU



GS5850T
2 CPU, 10 GPU



GS4855ST
1 CPU, 10 GPU



GS4850T
2 CPU, 10 GPU



GS2055ST
1 CPU, 4 GPU



GS2050T
2 CPU, 4 GPU



WS2050
2 CPU, 4 GPU



WS1050
2 CPU, 2+1 GPU



WS950
1 CPU, 4 GPU



WS945
1 CPU, 4 GPU



WS850
1 CPU, 2 GPU

SuperRack solution

- Enterprise-level AI data processing center



Thank You